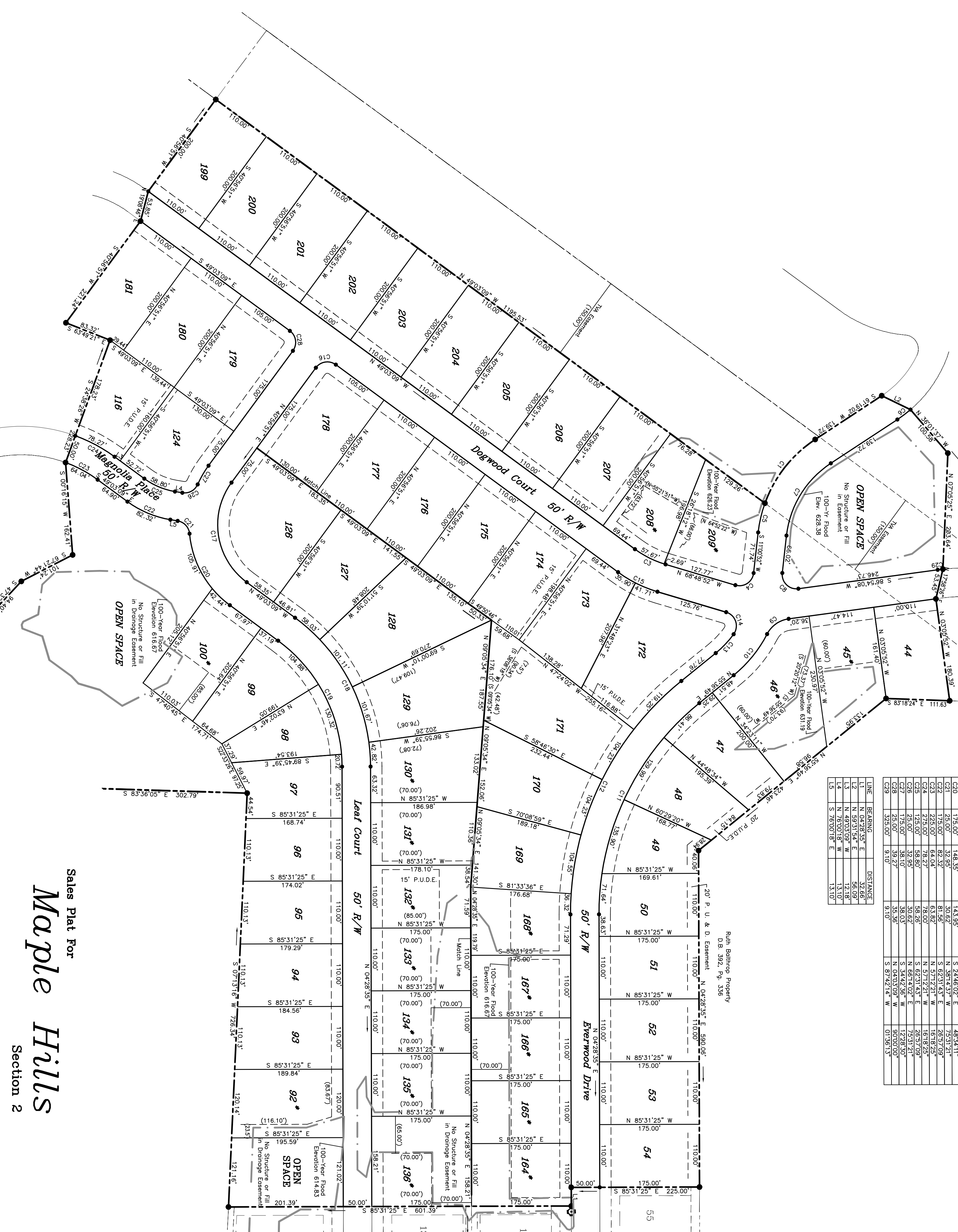
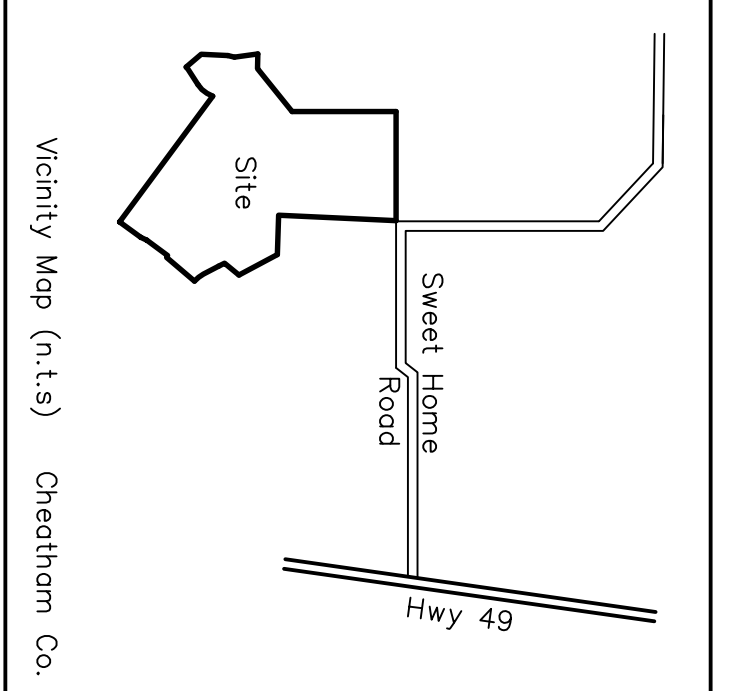
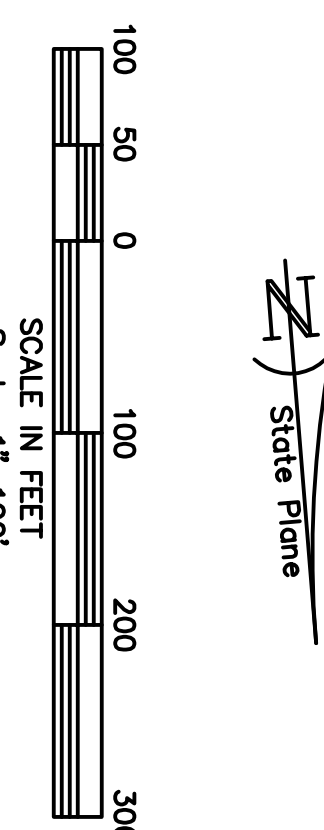


CURVE	RADIUS	ARC LENGTH	CHORD LENGTH	CHORD BEARING	DELTA ANGLE
C1	175.00	60.48	60.48	S 85°31'25" E	104.44°
C2	225.00	80.48	80.48	S 85°31'25" E	104.44°
C3	275.00	100.48	100.48	S 85°31'25" E	104.44°
C4	325.00	120.48	120.48	S 85°31'25" E	104.44°
C5	375.00	140.48	140.48	S 85°31'25" E	104.44°
C6	425.00	160.48	160.48	S 85°31'25" E	104.44°
C7	475.00	180.48	180.48	S 85°31'25" E	104.44°
C8	525.00	200.48	200.48	S 85°31'25" E	104.44°
C9	575.00	220.48	220.48	S 85°31'25" E	104.44°
C10	625.00	240.48	240.48	S 85°31'25" E	104.44°
C11	675.00	260.48	260.48	S 85°31'25" E	104.44°
C12	725.00	280.48	280.48	S 85°31'25" E	104.44°
C13	775.00	300.48	300.48	S 85°31'25" E	104.44°
C14	825.00	320.48	320.48	S 85°31'25" E	104.44°
C15	875.00	340.48	340.48	S 85°31'25" E	104.44°
C16	925.00	360.48	360.48	S 85°31'25" E	104.44°
C17	975.00	380.48	380.48	S 85°31'25" E	104.44°
C18	1025.00	400.48	400.48	S 85°31'25" E	104.44°
C19	1075.00	420.48	420.48	S 85°31'25" E	104.44°
C20	1125.00	440.48	440.48	S 85°31'25" E	104.44°
C21	1175.00	460.48	460.48	S 85°31'25" E	104.44°
C22	1225.00	480.48	480.48	S 85°31'25" E	104.44°
C23	1275.00	500.48	500.48	S 85°31'25" E	104.44°
C24	1325.00	520.48	520.48	S 85°31'25" E	104.44°
C25	1375.00	540.48	540.48	S 85°31'25" E	104.44°
C26	1425.00	560.48	560.48	S 85°31'25" E	104.44°
C27	1475.00	580.48	580.48	S 85°31'25" E	104.44°
C28	1525.00	600.48	600.48	S 85°31'25" E	104.44°
C29	1575.00	620.48	620.48	S 85°31'25" E	104.44°
C30	1625.00	640.48	640.48	S 85°31'25" E	104.44°



Sales Plat For
Maple Hills
Section 2



Developers:
Bill Hall
931-362-9526

Dwg. No.: 0602862.dwg Scale: 1" = 100'	Sales Plat For:	Prepared For:	Drawn By: HBL Checked By:
	Date: 10-8-08 Job No.: 06-028 Sheet No. 1 of 1	Maple Hills Section 2 Cheatham County, Tennessee	